

Montageanleitung



- (GB) mounting instruction | (NL) montage instructies | (PL) montaż instrukcje
(TR) montaj talimatlar | (RU) сборка инструкции | (IT) montaggio istruzioni
(FR) Assemblée directives | (RO) asamblare instrucțiuni | (SK) montáža navodila
(CZ) montáž instrukce | (HU) gyűlés utasítás

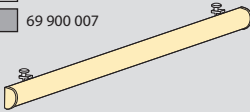
Stoff für Flächenvorhang

Für Klemmpaneel

for curtain rail · system zamocowania · для карниза · perde çubuk için · pro opona tyče

□ 69 900 507

■ 69 900 007



verwendbar mit Stil 16 und 20, Alu-Schiene, Kunststoff-Schiene SAM und SM-plus

For use with Style 16 and 20, aluminum rail, plastic rail SAM and SM-plus

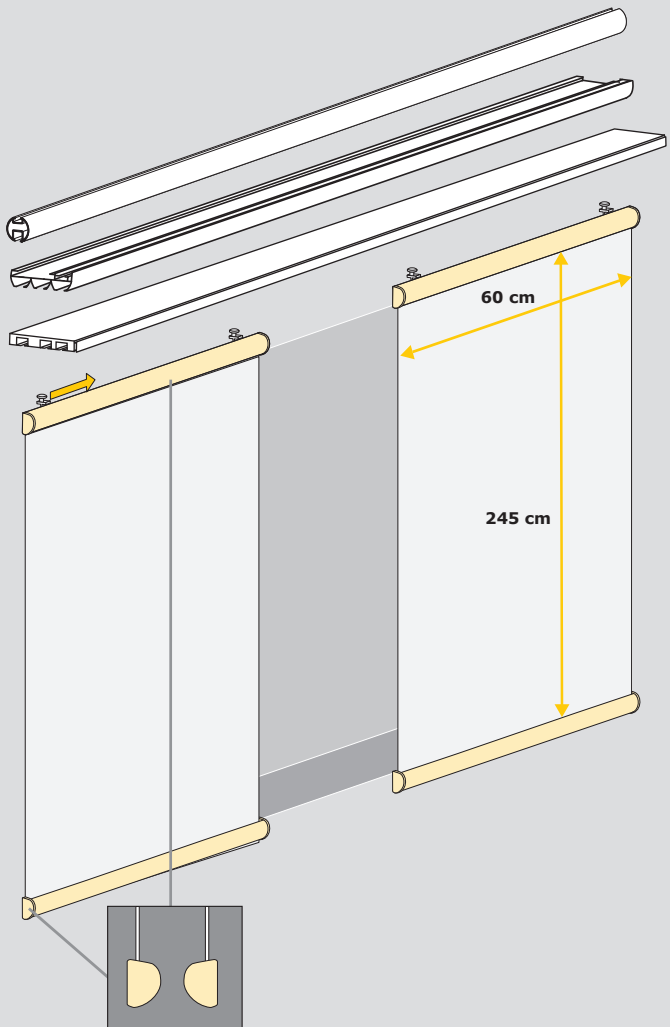
Do użytku z Style 16 i 20, szyny, szyny z tworzywa sztucznego z aluminium i SM wraz SAM

Для использования с стиле 16 и 20, алюминиевой направляющей, пластик железнодорожного SAM и SM плюс

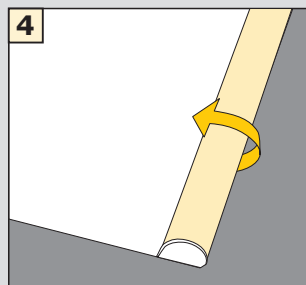
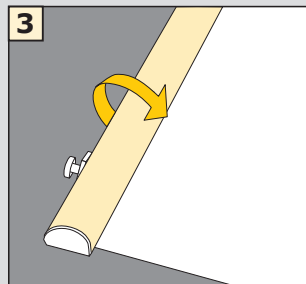
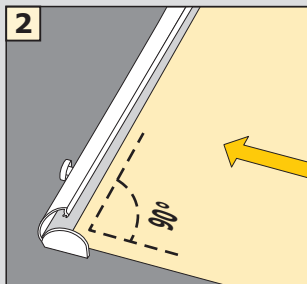
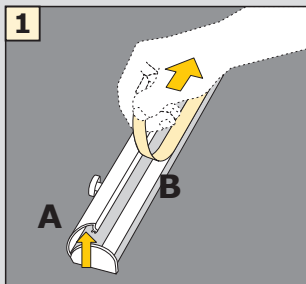
Stil 16 ve 20, alüminyum ray, plastik ray SAM ve SM artı ile birlikte kullanım için

Pro použití s stylu 16. a 20., hliníkové zábradlí, plastové kolejnice SAM a SM navíc

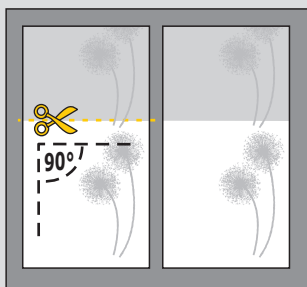
fabric for panel curtain · material na panele
поверхности материала для штор · perdeler için yüzey
malzemesi · povrchu materiálu na záclony



Stoff einlegen • insert fabric • material zamocować • Ткань вставки •
Kumaş eklemek • Fabric vložit



Stoff kürzen • shorten fabric • Skracanie materialu • Ткань отделки •
Kumaş Döşeme • Fabric trim



Nicht • Not • Nie • не • değil • ne

