

# Montageanleitung

## Vorhang-Stange 1-Lauf | 2-Lauf

(GB) Mounting instruction

(PL) montaż instrukcje

(RU) сборка инструкции

(FR) Assemblée directives

(SK) montáž navodila

(HU) gyűlés utasítás

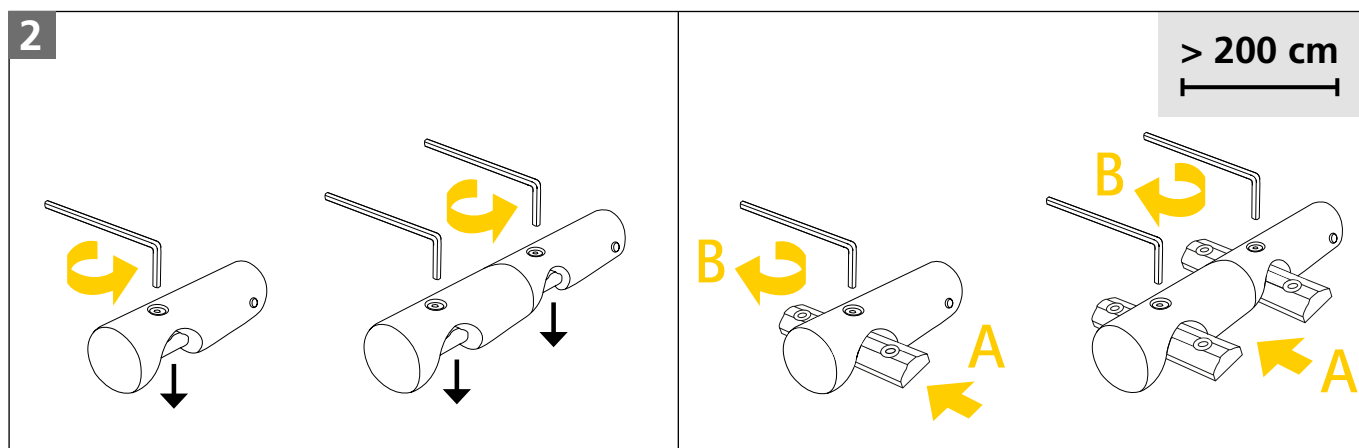
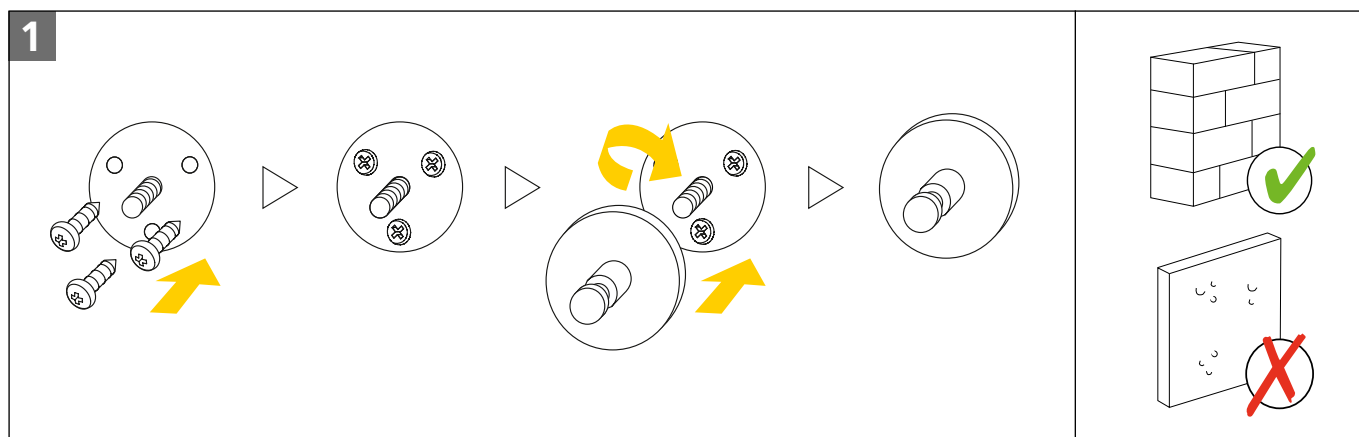
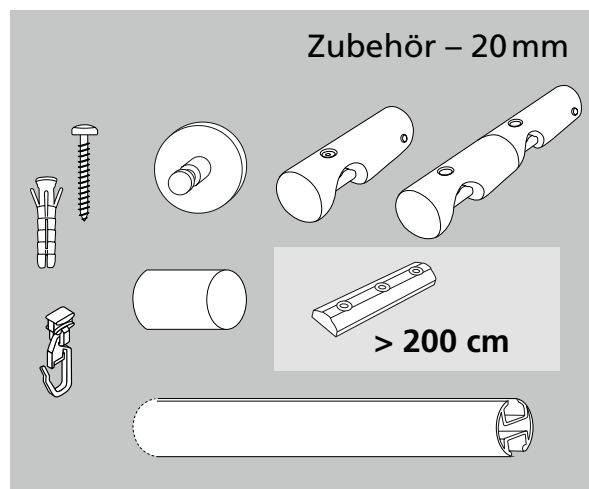
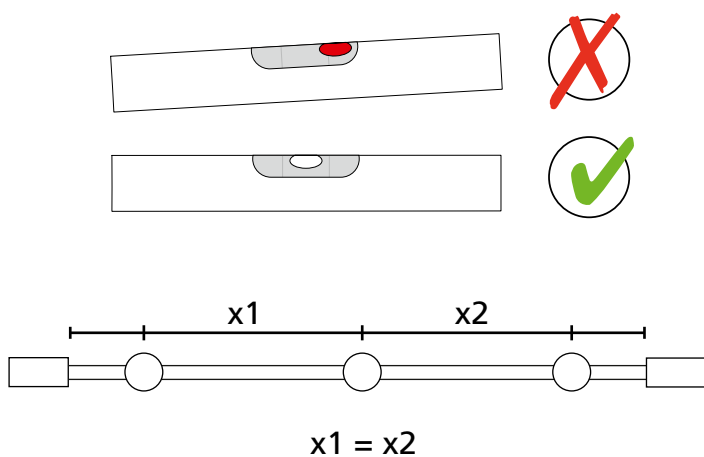
(NL) montage instructies

(TR) montaj talimatlar

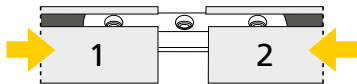
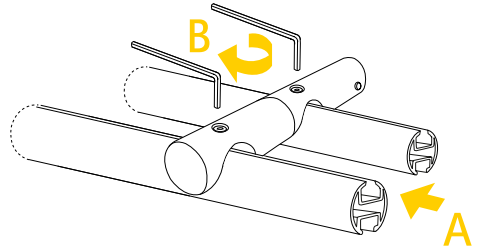
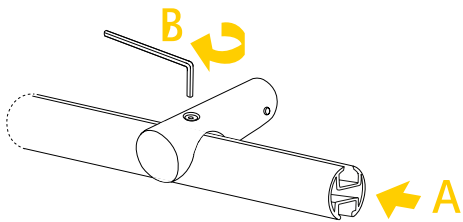
(IT) montaggio istruzioni

(RO) asamblare instrucțiuni

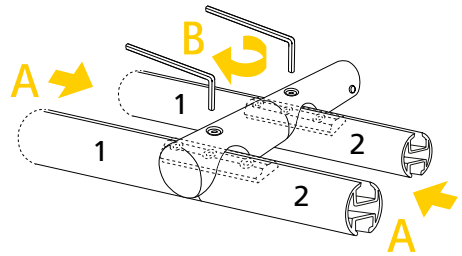
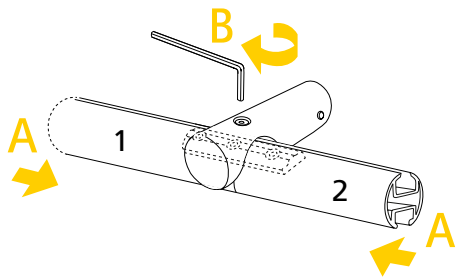
(CZ) montáž instrukce



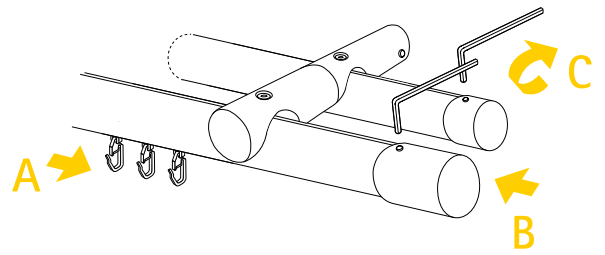
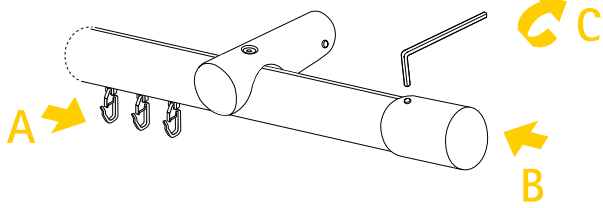
3



> 200 cm



4



5

