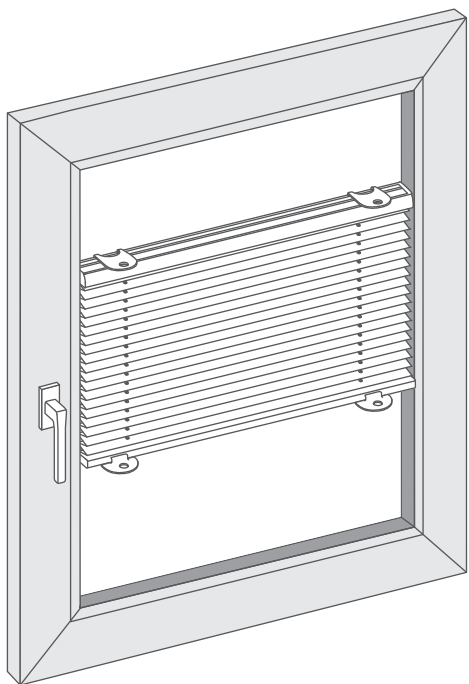
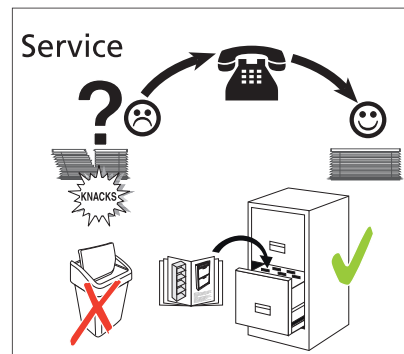


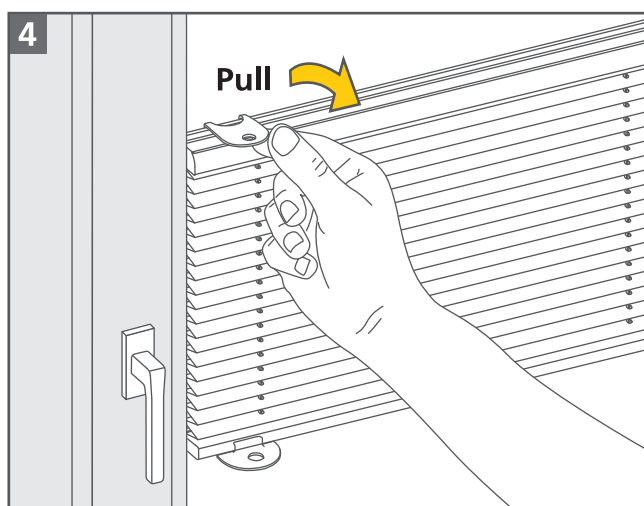
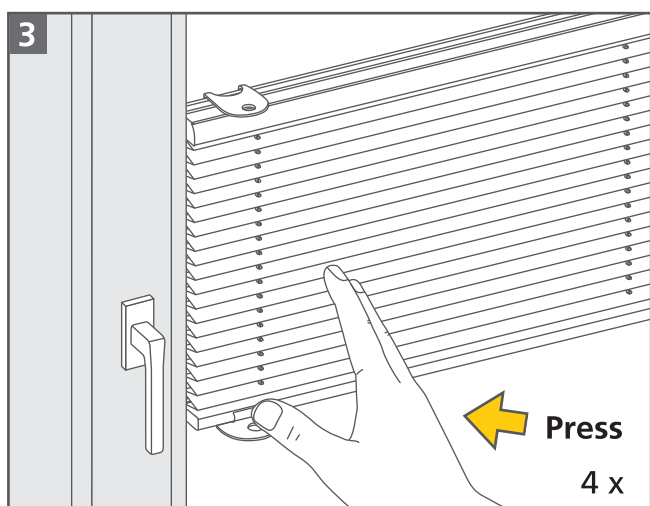
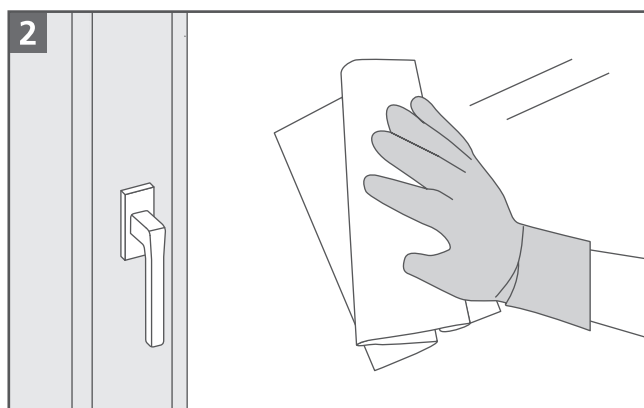
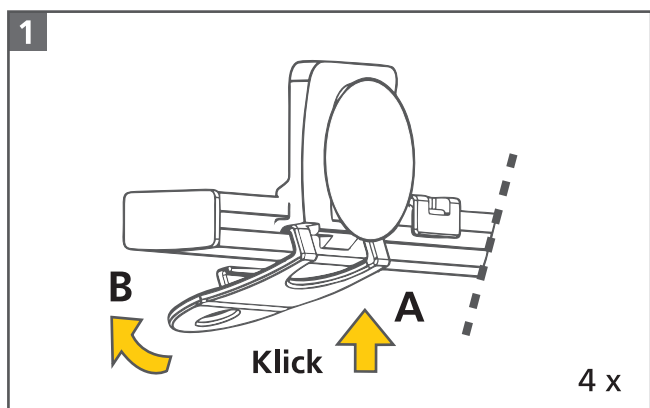
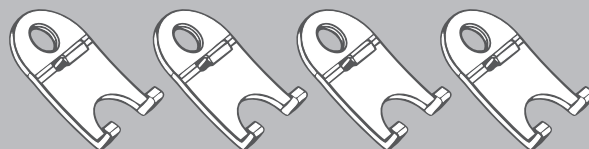
# Montageanleitung Plissee mit Saugknöpfen

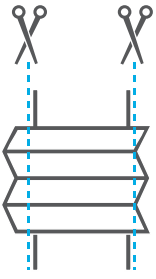
- Ⓒ Mounting instruction
- Ⓒ montaż instrukcje
- Ⓒ сборка инструкции
- Ⓒ Assemblée directives
- Ⓒ montaggio istruzioni

- Ⓒ montáž navodila
- Ⓒ gyűlés utasítás
- Ⓒ montage instructies
- Ⓒ montaj talimatlar
- Ⓒ asamblare instructiuni
- Ⓒ montáž instrukce



## Zubehör





- ⓁⒹ Kürzen der Anlagenbreite
- ⒼⒹ Cut the width
- ⓅⒾ Wytnij szerokość
- ⓇⓊ Вырезать ширину
- ⓕⓇ Couper la largeur
- ⓂⓉ Accorciare la larghezza

- ⓈⓀ Skrátte šírku
- ⒽⓊ lerövidítse a szélességet
- ⓃⒻ verkort de breedte
- ⓉⓇ genişliğini kısaltmak
- Ⓡⓞ scurtați lățimea
- ⓈⓏ zkrátit šírku

